



**PCM**

**£950**

2 x 

1 x 

1 x 

**Albert Road,  
Ramsgate, CT11**



## Special Christmas Offer – Move In Before Christmas!

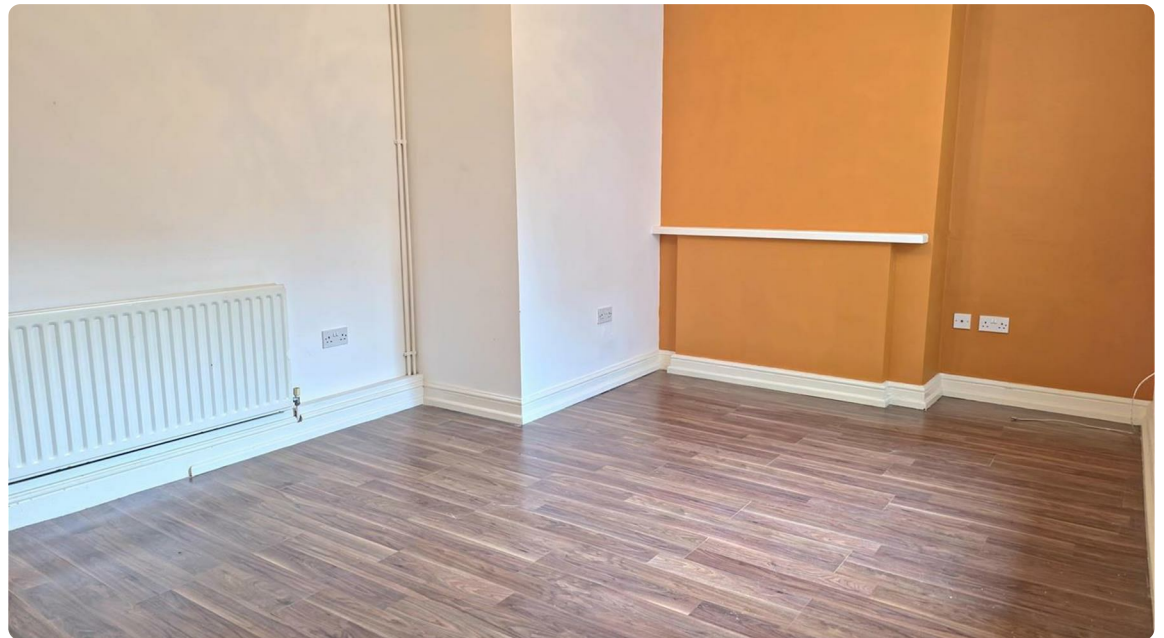
To help you settle in for the holidays, we're offering 50% off the first month's rent for tenants who move in before Christmas. This limited-time incentive provides a great opportunity to secure a lovely home at a reduced upfront cost. Don't miss out—enquire now to take advantage of this festive offer!

Located just moments from the seafront, this delightful two-bedroom basement flat offers comfortable coastal living with sea views right from your doorstep.

The property features a spacious Living Room, a well-equipped Kitchen to the rear with fitted wall and base units, oven/hob space for a fridge freezer, a handy pantry, and direct access to a private courtyard garden, perfect for relaxing outdoors.

Both Bedrooms are generous doubles, and the Bathroom is fitted with a classic three-piece suite.

Ideally positioned close to local amenities, transport links, and Ramsgate's picturesque harbour, this home is perfect for anyone looking to enjoy the charm of seaside living.









- EPC Rating - D
- Two double bedrooms
- Sea views from the street
- Kitchen & Pantry
- Private courtyard garden
- Close to seafront and local amenities
- Great central Ramsgate location
- Available Now
- Basement Flat












Energy Efficiency Rating		
	Current	Potential
Very energy efficient - lower running costs		
(92 plus) <b>A</b>		
(81-91) <b>B</b>		
(69-80) <b>C</b>		
(55-68) <b>D</b>		
(39-54) <b>E</b>		
(21-38) <b>F</b>		
(1-20) <b>G</b>		
Not energy efficient - higher running costs		
	63	77
<b>England &amp; Wales</b>	EU Directive 2002/91/EC 	

Environmental Impact (CO <sub>2</sub> ) Rating		
	Current	Potential
Very environmentally friendly - lower CO <sub>2</sub> emissions		
(92 plus) <b>A</b>		
(81-91) <b>B</b>		
(69-80) <b>C</b>		
(55-68) <b>D</b>		
(39-54) <b>E</b>		
(21-38) <b>F</b>		
(1-20) <b>G</b>		
Not environmentally friendly - higher CO <sub>2</sub> emissions		
<b>England &amp; Wales</b>	EU Directive 2002/91/EC 